

THIRD EDITION

The Binche Bulletin!



Hadih!

Welcome to the third edition of the Binche Bulletin. We hope that you and your loved ones remain in good health and spirits despite the ongoing hardships we are all experiencing as a result of COVID-19.

This newsletter shares updates and information about two ongoing community projects:

- 1. The Binche Whut'en Comprehensive Community Plan; and**
- 2. The Binche Whut'en Freshwater Stewardship Program.**

We also wanted to take a moment to acknowledge and give thanks to Chief Tracy Anatole's engagement on these projects and commitment to building a better future for Binche Whut'en.

1 BINCHE WHUT'EN COMPREHENSIVE COMMUNITY PLAN (CCP) UPDATE: WHAT WE'VE BEEN DOING

Binche Whut'en would like to thank participating community members and staff for your part in three successful virtual Community Planning workshops. We heard from members representing their personal and/or organizational perspectives with great ideas for informing Binche Whut'en's Comprehensive Community Plan. The CCP will include community member input from the workshops on priorities for the next 5-10 years as identified in the Community Planning survey and interviews conducted last Fall. We appreciate your participation and all contributions are valued!

Vision Statement

Throughout engagement on the CCP, we asked members to describe a vision for Binche's future. Two options were posted to Binche Whut'en's Facebook page and members voted on which one they liked best. In social media and in community sessions, many people preferred the second statement, and we heard about the importance of adding the word 'respect'. This was done and the following is the Binche Whut'en Vision Statement that will guide the CCP.

BINCHE WHUT'EN VISION STATEMENT

"Binche Whut'en is self-governing with strong and transparent leadership and governance. Binche community members are prosperous and have access to education and economic opportunities. We are guided by and respect Dakelh values, laws, clan traditions and cultural teachings to take care of our people, lands, animals and traditional territories so that we ensure they are healthy now and for future generations of Binche."

"Alhgoh 'uts'ut'en"
We all work together



What is a Comprehensive Community Plan (CCP)?

A Comprehensive Community Plan (CCP) is a holistic, community-driven plan that includes goals and strategies for achieving a community's vision for the future. CCPs are developed with community input and guidance. They are designed to support decision making about the use of community resources.

Developing a CCP involves the entire community coming together to share their ideas for a better future. CCPs involve planning for all aspects of community wellbeing, including health, governance, the land, the economy, culture, housing, infrastructure development, and more.

Binche's CCP will showcase community voices and strengths. It will establish a roadmap to a healthy and sustainable future.



Word clouds images depicting the most frequently mentioned words during the Community Survey

WHAT WE HEARD: OUR COMMUNITY ENGAGEMENT SESSIONS

Our Community Engagement sessions that took place over two evenings in March were to offer the community opportunities to engage with the CCP process and hear about the results from the community profile. Our staff engagement was held for a half-day in March to review the community priorities and further develop action items. Here is a brief summary of what we heard during community & staff engagement.

HOUSING

Increase access to healthy, affordable, suitable housing for all members.

Actions:

- Provide resources, support, & workshops for Band members around housing
- Communication with membership around housing issues and maintenance
- Create clear housing policies

TERRITORY STEWARDSHIP

Protect and steward our lands and waters, including our fisheries and watersheds, our forests, and the animals we rely on.

Actions:

- Develop processes and procedures for territory stewardship
- Greater involvement in consultation and compliance monitoring of industry in Binche territory

ECONOMIC DEVELOPMENT

Promote local economic development that supports Binche values and creates employment for members.

Actions:

- Binche Whut'en members have support, funding and training opportunities, programs
- Binche Whut'en has own revenues and partnerships with industry, educational institutions

LANGUAGE AND CULTURE

Revitalize our Dakelh language and cultural practices.

Actions:

- Secure funding to help families access/establish language & culture
- Create audio recordings/interview of elders speaking Dakelh, singing songs, speaking oral history

COMMUNITY SAFETY

Support our members to feel safe and secure in our community.

Actions:

- Install outdoor security features – security cameras at Band owned facilities, increased lighting in community
- Revitalizing community justice circles/healing circles as a community safety and support mechanism

BAND GOVERNANCE

Strengthen our Band governance system.

Actions:

- More opportunities for members to learn about how the Bands governance operates (i.e. a virtual AGM)
- Use Traditional governance to inform Band governance

EDUCATION

Provide high quality education, capacity building, and training opportunities for members.

Actions:

- Education of Binche history, reconnection to land, language and culture
- Ensure equal access for student funding and support to pursue post-secondary training

(continued)

HEALTH AND WELLNESS

Support members' physical, mental, and emotional health and wellness through holistic programs that reflect Binche's culture.

Actions:

- Holistic healing supports for community members that teach safe and healthy habits (harm reduction)
- Reconnection programs for members to gather, share history

TRADITIONAL GOVERNANCE

Strengthen our traditional governance systems.

Actions:

- Understand relationship between keyoh holders and band governance
- Bring back ceremonies and potlatch, celebrations of births, name giving, rites of passage

ELDER AND YOUTH SUPPORT

Support our Elders & Youth.

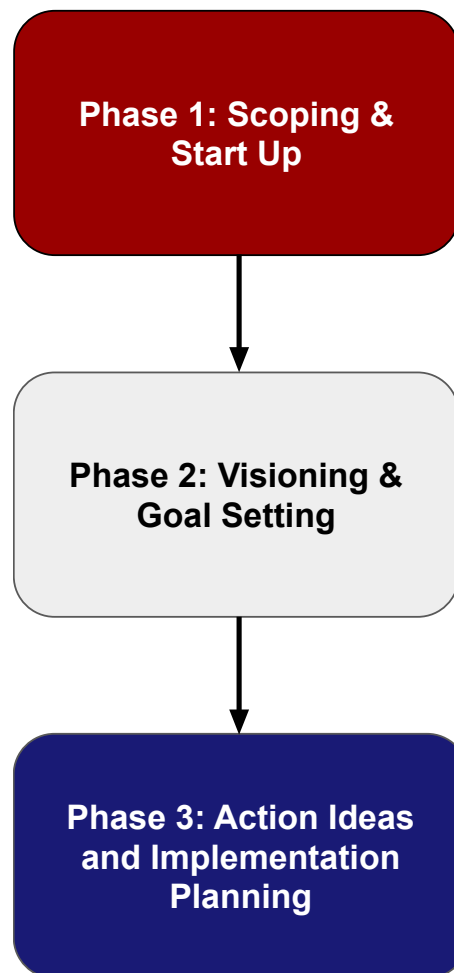
Actions:

- Engage and encourage youth where they are at in new ways to become interested in learning more about Binche language and culture
- Creating a "community of care" around checking in on elders and members of the community and raising youth to do the same

BINCHE WHUT'EN COMPREHENSIVE COMMUNITY PLAN — NEXT STEPS

Right now, we are finalizing Phase 3 of our Comprehensive Community Planning process. Phase 3 is all about developing action ideas into implementation plans. In other words, now that we have a vision and goals, how do we get there? The CCP draft final plan will be reviewed by staff, Chief and Council, before becoming a final Comprehensive Community Plan that will guide a healthy and sustainable future for Binche Whut'en.

BINCHE COMPREHENSIVE COMMUNITY PLANNING OVERVIEW



2 BINCHE WHUT'EN FRESHWATER STEWARDSHIP PROGRAM UPDATE: WHAT CAN THE BUGS TELL US?

We now have the lab results from last summer's successful field training and monitoring of Pinchi creek. These results will help us understand the health of the stream and allow us to monitor changes over time.

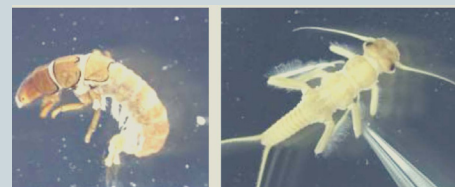
The Freshwater Stewardship Program kicked off last summer and successfully sampled several sites along Pinchi Creek. At each site, measurements were taken of water depth, flow, and water chemistry. As well as samples of the benthic invertebrates – the “bugs” living at the bottom of the stream. Invertebrates are often sensitive to changes in their environment, making them good indicators of the overall health of their environment. Biological monitoring (biomonitoring) of invertebrates helps us to understand the health of freshwater systems including potential stressors such as temperature changes, sediment in the water, or contaminants.

The samples were sent away to a lab for DNA testing. The results of this DNA analysis tell us what species of bugs were found in Pinchi creek. Because some species are very sensitive to certain environmental stressors, such as pollutants, it helps us understand how healthy the stream is and what kinds of stressors may be affecting the stream's health.

The results of the DNA analysis showed that there were 56 species of invertebrates found in Pinchi Creek. These included benthic invertebrates that are very sensitive to pollutants in streams, such as mayflies (Ephemeroptera), stoneflies (Plecoptera) and caddisflies (Trichoptera). This tells us that Pinchi creek has clean enough waters for these sensitive species to exist. These results help us understand the health and ecology of Pinchi Creek and will allow us to monitor changes over time.

Examples of invertebrates found in Pinchi Creek

Some examples of the EPT taxa detected. Left: species of net-spinning caddisfly (Trichoptera) in the family Hydropsychidae; Right: species of springflies (Plecoptera) in the family Perlodidae All photos: ©CABIN Taxonomy



Mussi / Sna tcha il ya

We would love to hear from you!

If you have any questions, comments, or concerns about either of our two ongoing projects, please contact Kelley Williams directly at:

E: manager@binche.ca
P: 778-300-2497